

Commonwealth of Massachusetts
Department of Conservation and Recreation
Division of Water Supply Protection

FY '18 Forestry Project Proposals Wachusett Section



DWSP Internal Review of Proposed Forest Management Operations

✓ Each year, all watershed forest management operations go through an internal review process designed to tap into more expertise than is available to the forester alone.

The lots are reviewed by...

- ✓ Regional Directors
- ✓ Wildlife biologists
- ✓ Natural Resource staff
- ✓ Environmental Quality staff
- ✓ Civil Engineering
- ✓ DCR Archaeologist

✓ Comments\recommendations\restrictions are submitted to the foresters and incorporated into the management of each operation.

Forest Management Summary

Work is focused where a diversity of age classes is lacking

Openings are made in the forest overstory in order to give young trees the space and light they need to thrive

Openings range in size up to 2 acres and average about 1 acre in each operation

A few older trees are retained in most openings which provide important habitat and structural diversity

WACH. RES. W. BOYLSTON. 8-YEAR OLD WHITE PINES & 6 YR. OLD MAPLES, PLANTED SPRING OF 1903. PINES 3 YRS. OLD, MAPLES 1 YR. APR. 1, '09. 6327

DCR Wachusett Reservoir

Proposed Timber Sales FY 2018

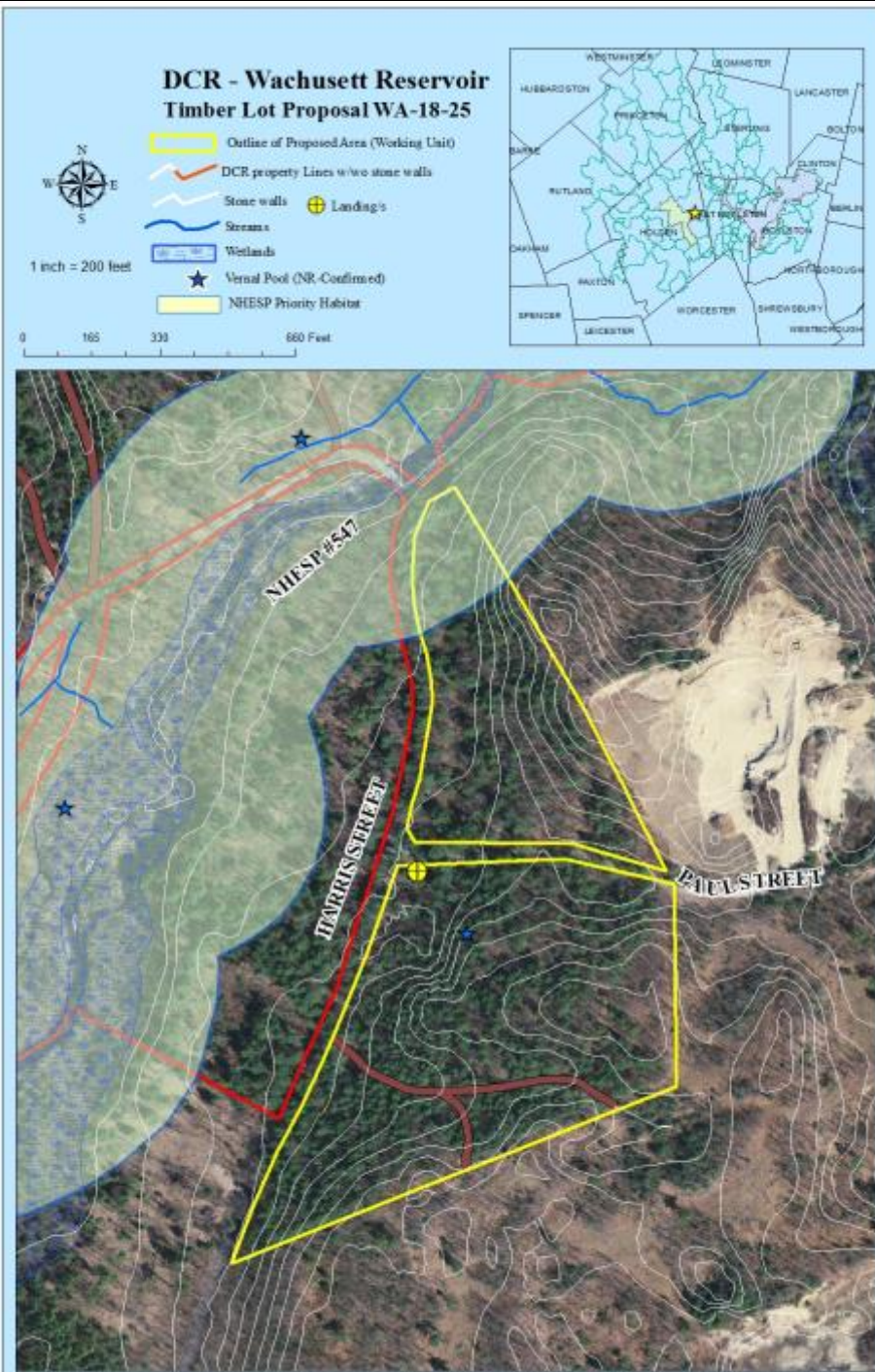


Locus Map (Scale 1:72,000 - 1 inch=6,000 feet)



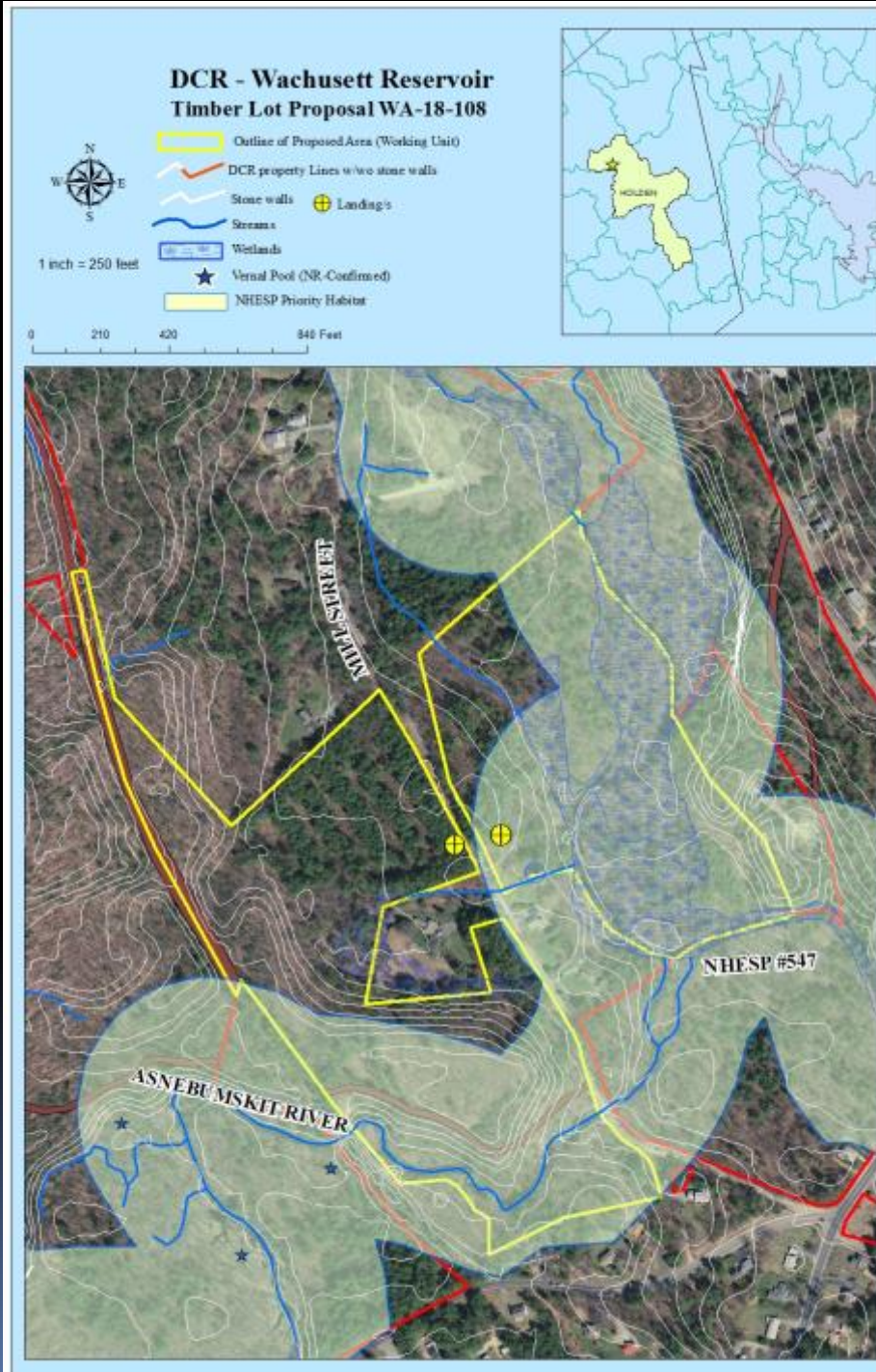
WA-18-25

- ✓ 21 acres of primarily white pine/oak forest
- ✓ This area was first cut by MDC in 1996.
- ✓ Diverse regeneration especially in the northern half – white pine, oaks, sugar maple, red maple, hemlock
- ✓ Work will focus on creating openings to release young trees
- ✓ Up to 6 acres of openings will be made
- ✓ The vernal pool adjacent to Harris Street will be protected



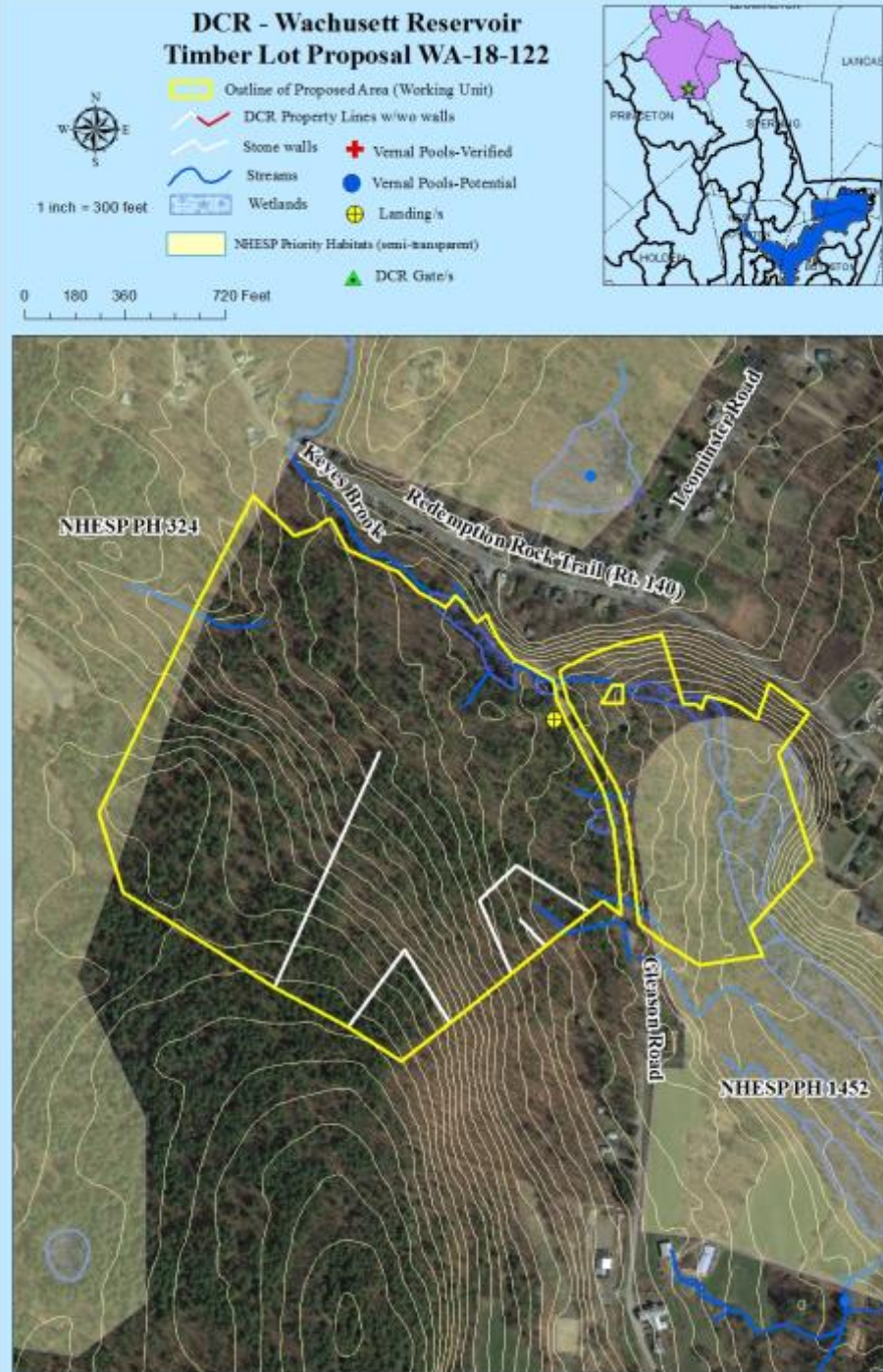
WA-18-108

- ✓ 33 acres of predominantly oak/hardwood and white pine forest
- ✓ The white pine was planted by the MDC in 1939
- ✓ Excellent regeneration from an MDC harvest in 1994 comprised of white oak, red oak, white pine, hemlock, red maple, sugar maple and pitch pine
- ✓ Up to 9 acres of openings will be made
- ✓ Intersects NHESP Priority Habitat for wood turtles



WA-18-122

- ✓ 63 acres of predominantly white pine/hardwood and oak/hardwood forest
- ✓ Heavy logging occurred on much of the property west of Gleason Rd. prior to DCR acquisition
- ✓ Excellent regeneration comprised of white pine, oaks, red maple, white ash, black birch and sugar maple
- ✓ Up to 21 acres of openings will be made
- ✓ The remains of the Temple-Stuart Chair Company mill are on this site and will be protected.
- ✓ No work will occur east of Gleason Rd.



WA-18-147

- ✓ 45 acres of white pine/oak forest
- ✓ The white pine was planted in 1930. Red pine and Austrian pine were planted in 1933.
- ✓ Previous operations in 1983 and 2000, have led to an excellent understory of white pine along with oaks and red maple
- ✓ Openings totaling up to 15 acres will be made focusing on releasing white pine
- ✓ Intersects NHESP Priority Habitat for Common loon and Bald eagle
- ✓ The remains of a Cold War era military communications facility are present. It was active from 1955 to 1963.



WA-18-154

- ✓ 35 acres of primarily mixed oak and white pine/oak forest
- ✓ About half of this area was harvested in 1994 and 2000 resulting in the establishment of white pine, oaks, red maple and hemlock
- ✓ Up to 12 acres of openings will be made
- ✓ The focus will be to encourage the white pine over the oaks, given that pine is far superior in quality and vigor on this dry site
- ✓ There are three vernal pools which will receive appropriate protection
- ✓ Intersects NHESP Priority Habitat for Common loon and Bald eagle



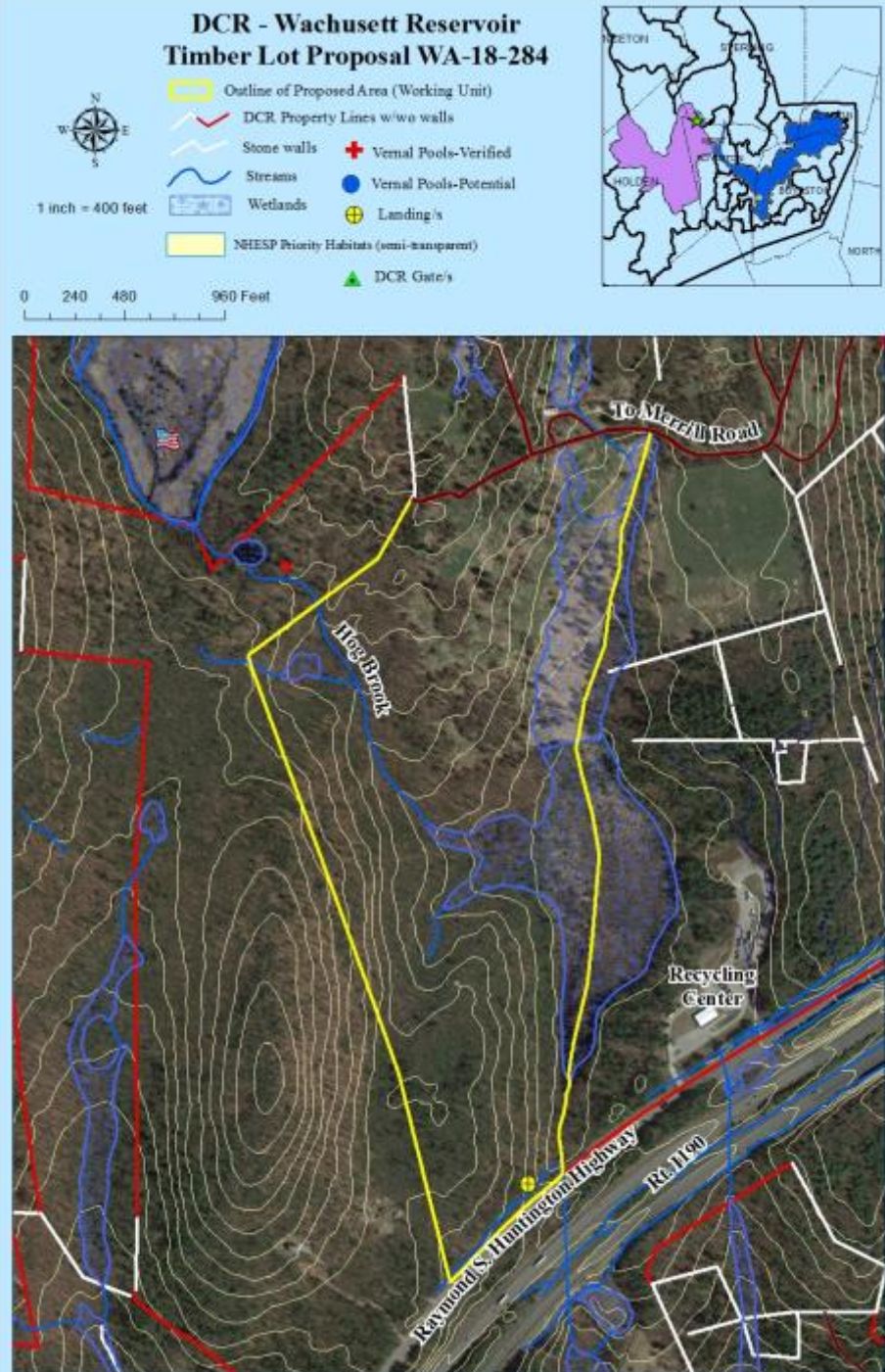
WA-18-211

- ✓ 65 acres of mixed hardwood, red oak and white oak/oak forest
- ✓ Logging in the mixed hardwood stand in the early 1990s prior to MDC acquisition led to an understory of yellow birch, black birch, red maple, paper birch and red oak
- ✓ The understory in the red oak stand is comprised of black birch, hickory, red maple, red oak, white oak and black cherry
- ✓ Up to 22 acres of openings will be made
- ✓ Two stream crossings are necessary; one of Rocky Brook and the other of the smaller, unnamed brook to the east
- ✓ The vernal pool under the power lines near Justice Hill Rd. will be protected



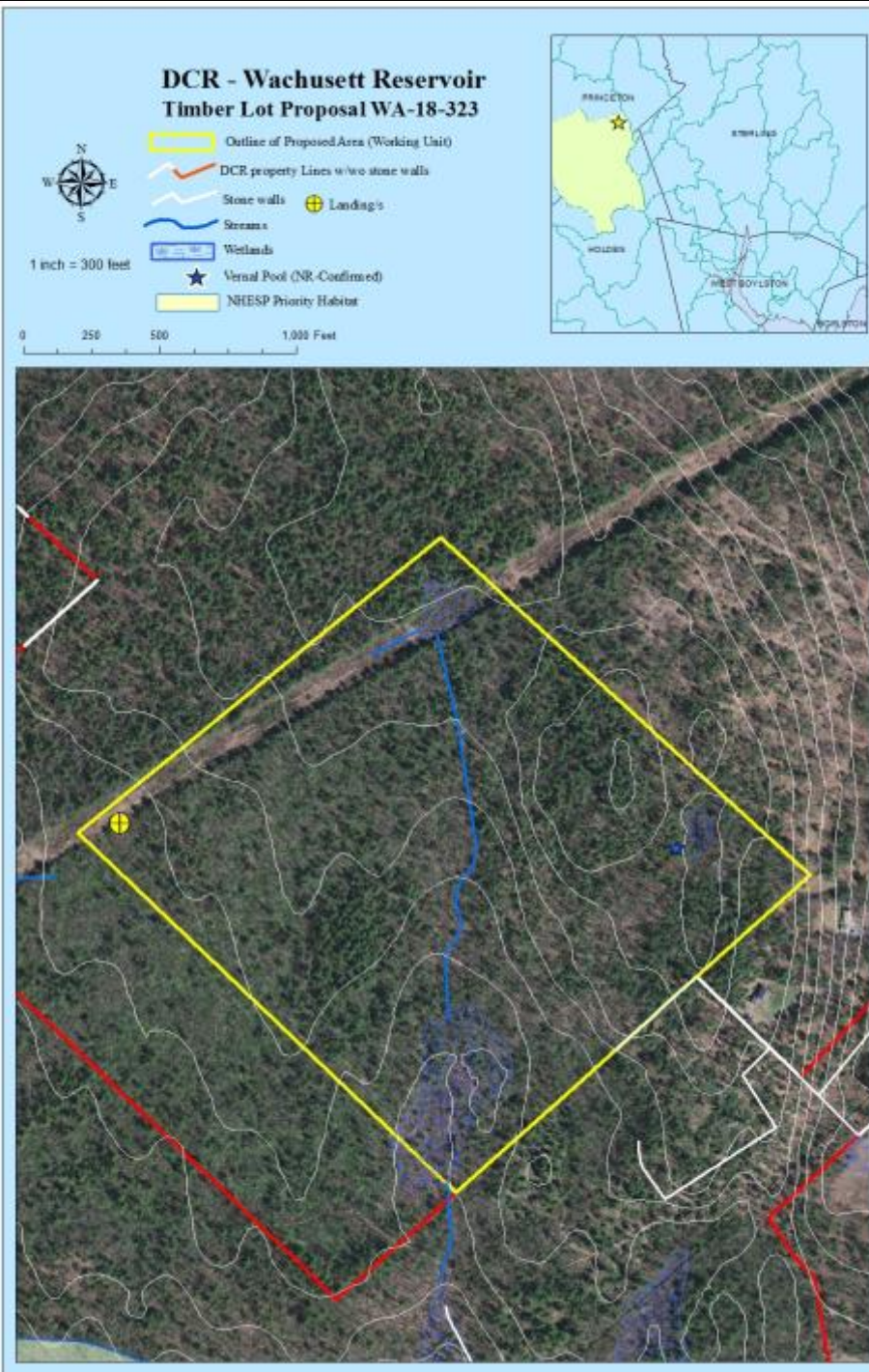
WA-18-284

- ✓ 65 acres mixed oak, red oak and mixed hardwood stands
- ✓ The understory is dominated by a thick layer of mountain laurel
- ✓ Very limited regeneration
- ✓ The goal will be to begin the establishment of regeneration by the partial cutting of the overstory coupled with the intentional damaging of the mountain laurel
- ✓ One crossing of Hog Brook is required



WA-18-323

- ✓ 65 acres of white pine/hardwood and white pine oak forest
- ✓ This property was acquired in 2010 and was logged in 2000
- ✓ Much of the area east of the stream has excellent regeneration comprised of white pine, red oak, white oak, sassafras, red maple and black birch
- ✓ The area west of the stream is dominated by mountain laurel although there is some regeneration present in pockets
- ✓ Up to 21 acres of openings will be made



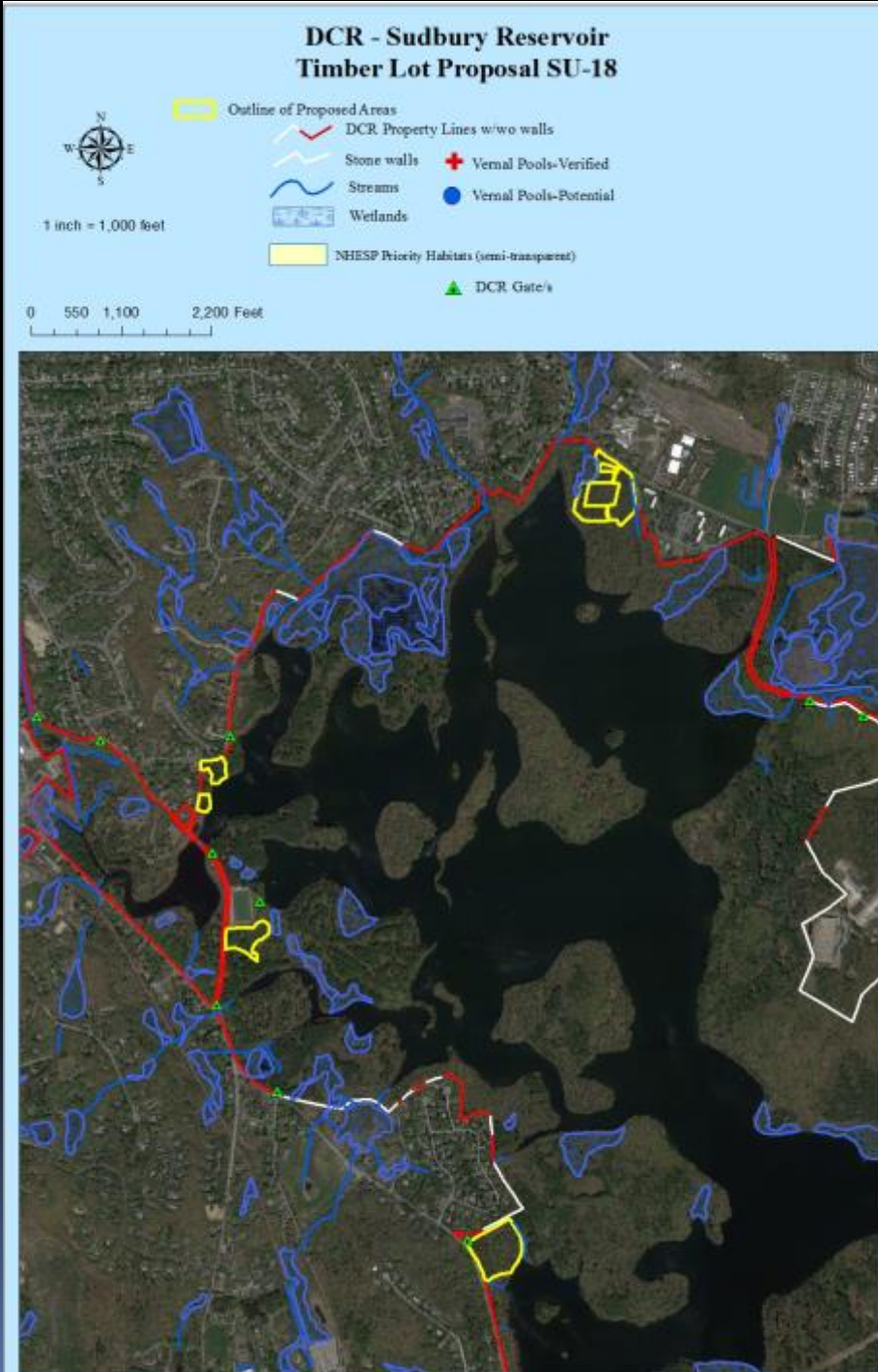
SU-18

✓ 12.3 acres of red pine plantations that were established in 1917

✓ The red pine at these sites are infected with the annosum root disease. This disease results in expanding clusters of infected trees, with the most recently infected trees on the outside of the cluster and dead trees towards the middle.

✓ These sites have been chosen because of the risk to public safety that allowing these trees to die will pose

✓ While individual red pine trees may be left at each site for habitat diversity purposes, the goal is the removal of the red pines while they still have value as opposed to removing dangerous dead trees, which comes at a significant cost.



✓ Written public comments are due by July 24th in order for the Division to address the public issues and incorporate suggestions and concerns into the silvicultural prescriptions.

✓ Public tours will be offered for any of the proposed timber sales. If interested, please notify DCR Forester Greg Buzzell at 508-792-7806 ext. 317. Tours are available until July 24th.

✓ For more information: <http://www.mass.gov/eea/agencies/dcr/water-res-protection/watershed-mgmt/watershed-forestry.html>

✓ Questions/Comments?